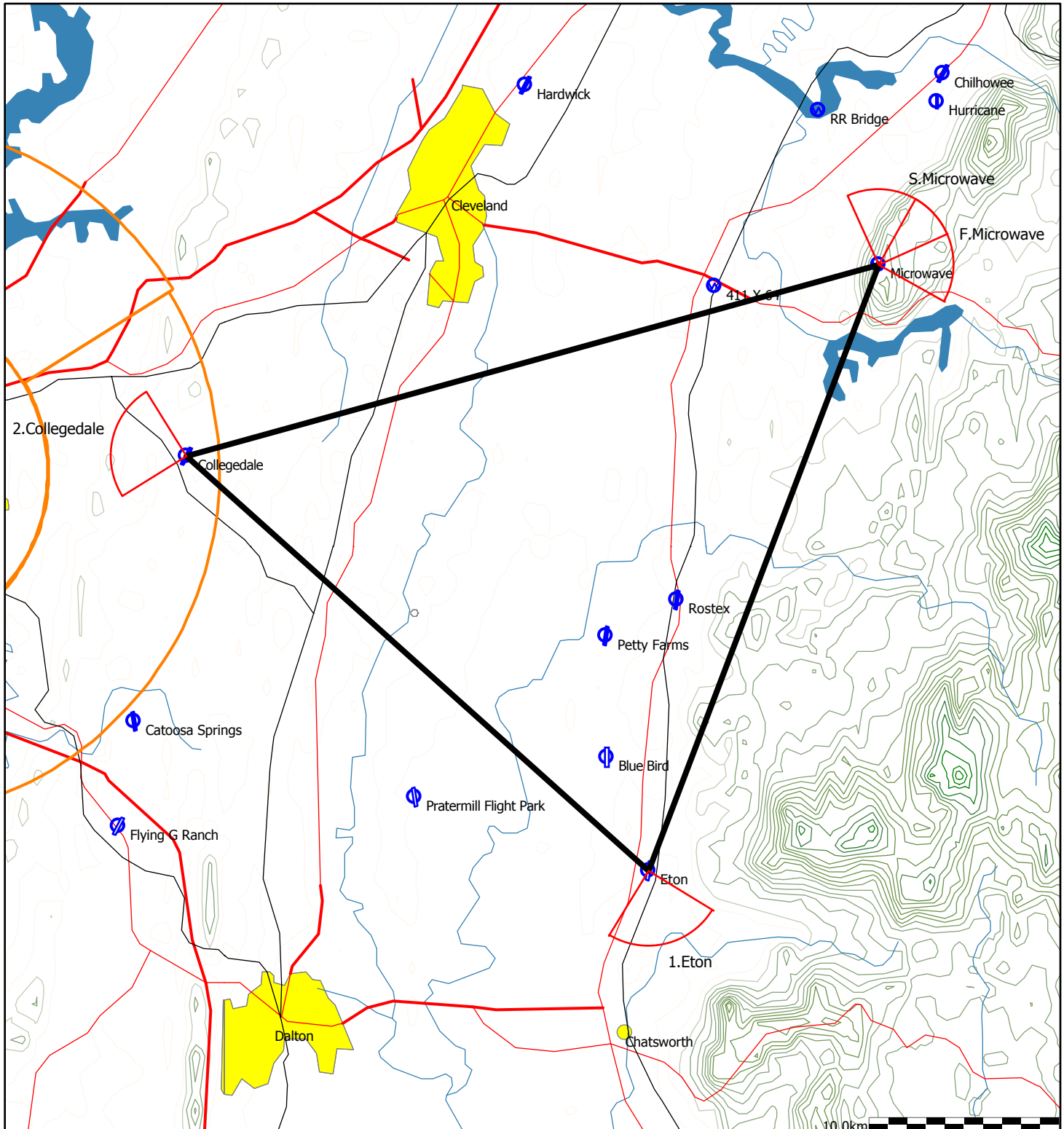


Type: FAI Triangle - (104.6km)

100k Triangle Microwave Eton Collegedale

Task distance: 104.6km

Style	Code	Points	Latitude	Longitude	Dis.	Crs.
Take off	1	Chilhowee	N35°13.450'	W084°35.060'		
Start	17	Microwave	N35°08.000'	W084°37.300'		
1.Point	7	Eton	N34°50.805'	W084°45.280'	34.1km	201°
2.Point	COLLEGDL	Collegedale	N35°02.588'	W085°01.314'	32.7km	312°
Finish	17	Microwave	N35°08.000'	W084°37.300'	37.8km	74°
Landing	1	Chilhowee	N35°13.450'	W084°35.060'		

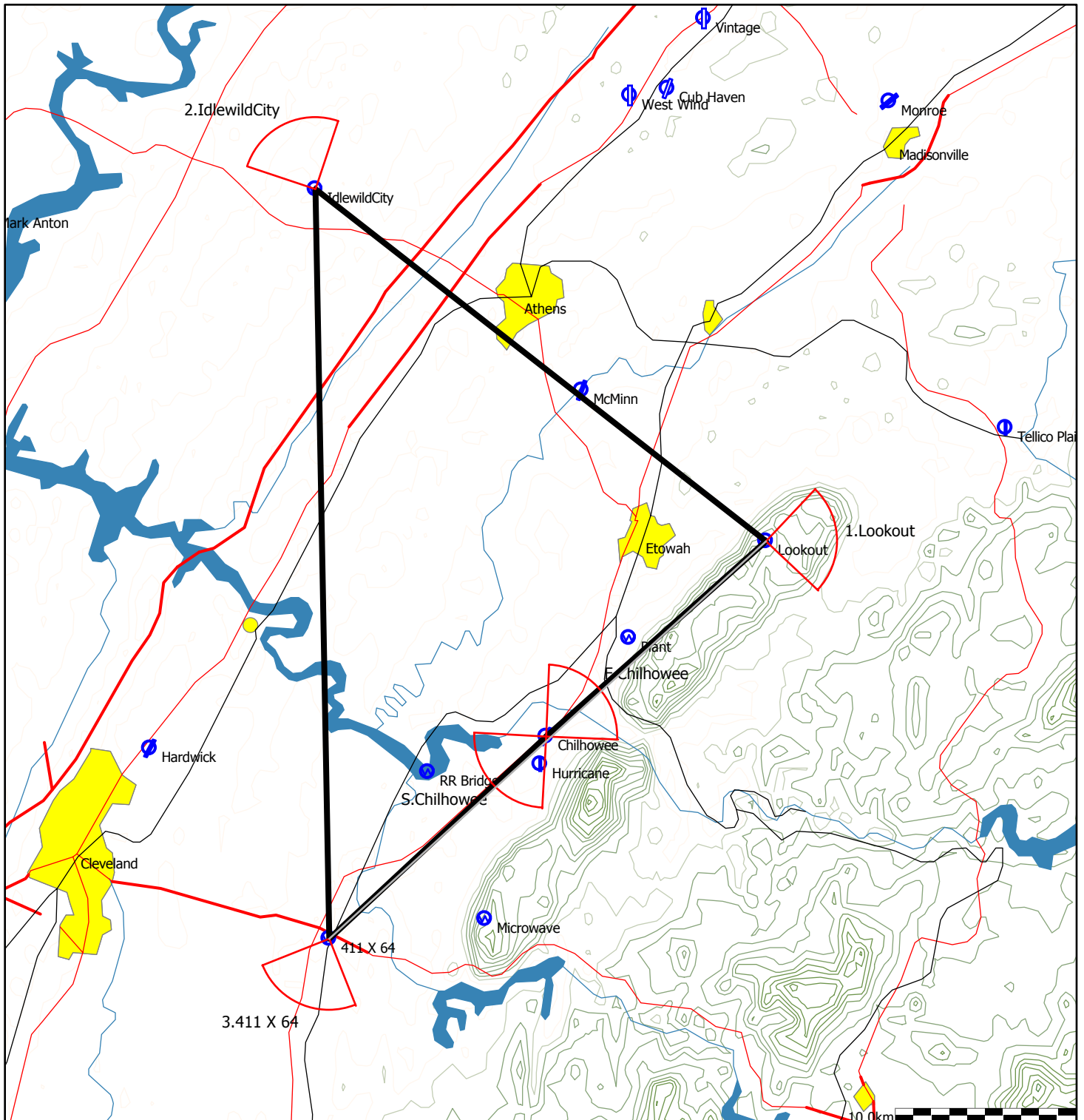


Type: FAI Triangle, Start on leg - (106.0km)

100k Triangle 411x64 Lookout IdlewildCity*

Task distance: 106.0km

Style	Code	Points	Latitude	Longitude	Dis.	Crs.
Take off	1	Chilhowee	N35°13.450'	W084°35.060'		
Start	1	Chilhowee	N35°13.450'	W084°35.060'		
1.Point	12	Lookout	N35°19.300'	W084°27.000'	16.3km	48°
2.Point		IdlewildCity	N35°29.850'	W084°43.500'	31.7km	308°
3.Point	2	411 X 64	N35°07.400'	W084°43.000'	41.6km	179°
Finish	1	Chilhowee	N35°13.450'	W084°35.060'	16.4km	47°
Landing	1	Chilhowee	N35°13.450'	W084°35.060'		



Type: FAI Triangle - (118.4km)

100k Triangle Plant* Vintage MarkAnton

Task distance: 118.4km

Style	Code	Points	Latitude	Longitude	Dis.	Crs.
Take off	1	Chilhowee	N35°13.450'	W084°35.060'		
Start		Plant	N35°16.400'	W084°32.000'		
1.Point	VINTAGE	Vintage	N35°34.938'	W084°29.279'	34.6km	7°
2.Point	13	Mark Anton	N35°29.090'	W084°55.560'	41.1km	255°
Finish		Plant	N35°16.400'	W084°32.000'	42.7km	123°
Landing	1	Chilhowee	N35°13.450'	W084°35.060'		

